



**SPDA**  
SOCIETY FOR THE PREVENTION  
OF DISORDERS OF AGGRESSION

**What is the most common reason children are referred for mental health treatment in North America? The answer might surprise you.**

**Answer:** Symptoms of disorders of aggression, including Conduct Disorder (CD), Oppositional Defiant Disorder (ODD), and Callous-Unemotional (CU) traits. We are the only organization dedicated to providing information, support, and resources to the underserved children, adults, and families affected by disorders of aggression, and to the clinicians who treat them.



**NEED**

Symptoms of disorders of aggression are the most common reason children are referred for mental health care, with as many as 1 in 10 children receiving diagnoses of CD or ODD.



**EXPERIENCE & EXPERTISE**

We are the only organization run by all key stakeholders: scientists, clinicians, and individuals and families affected by disorders of aggression.



**IMPACT**

Effective screening and treatments for disorders of aggression, including CD, ODD, CU Traits, and psychopathy exist! But too many children and adults who would benefit do not yet have access to them.



**600% ROI**

Treating disorders of aggression is cost-effective. For example, it is estimated that for every \$1 invested in effective treatments of psychopathy, \$7.18 is saved—a 600% return on investment.\*

\*Delisi et al (2018). <https://doi.org/10.1108/JCP-07-2017-0031>



**TAKE A SCREENING TEST**

<https://disordersofaggression.org/screening/>

# Our Numbers



**YouTube**  
5.8+ Million  
VIEWS



**1+ Million**  
VISITORS



**300,000+**  
SCREENINGS TAKEN



TRANSLATIONS INTO  
**7 LANGUAGES**

## LEARN MORE ABOUT US IN THESE MAJOR MEDIA PUBLICATIONS



**SCIENTIFIC  
AMERICAN**

**AGGRESSION DISORDERS ARE SERIOUS,  
STIGMATIZED AND TREATABLE**

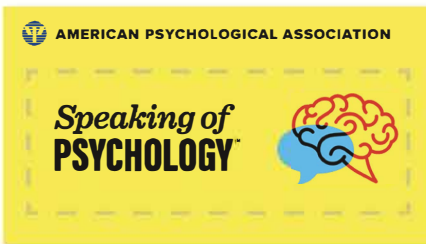
Abigail Marsh, PhD



**BBC**

**WHAT IT'S LIKE LIVING  
AS A FEMALE PSYCHOPATH**

Megha Mohan



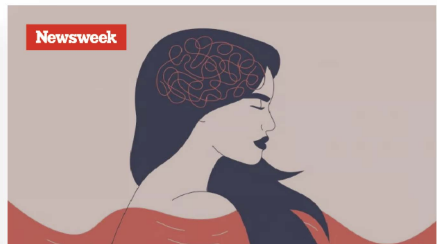
**AMERICAN PSYCHOLOGICAL ASSOCIATION**

**Speaking of  
PSYCHOLOGY**



**WHY PSYCHOPATHY IS MORE  
COMMON THAN YOU THINK**

with Abigail Marsh, PhD



**Newsweek**

**'I'M A PSYCHOPATH, HERE'S WHAT  
EVERYONE GETS WRONG'**

M.E. Thomas

### CONTACT US:

info@disordersofaggression.org  
disordersofaggression.org